

# Technical data sheet

## Product features



### Freezing cabinet 700 l GN 2/1, stainless steel, left door

<b>Model</b>	<b>SAP Code</b>	00021702
--------------	-----------------	----------



- GN / EN size in device: GN 2/1
- Chamber volume [l]: 458
- Minimum device temperature [°C]: -2
- Maximum device temperature [°C]: 7
- Insulation thickness [mm]: 90
- Door lock: No
- Annual energy consumption [kWh]: 332

<b>SAP Code</b>	00021702	<b>Number of internal parts</b>	3
<b>Net Width [mm]</b>	733	<b>Number of GN / EN</b>	24
<b>Net Depth [mm]</b>	867	<b>GN / EN size in device</b>	GN 2/1
<b>Net Height [mm]</b>	2090	<b>Minimum device temperature [°C]</b>	-2
<b>Net Weight [kg]</b>	149.20	<b>Maximum device temperature [°C]</b>	7
<b>Loading</b>	230 V / 1N - 50 Hz	<b>Refrigerant</b>	R290
<b>Chamber volume [l]</b>	458		

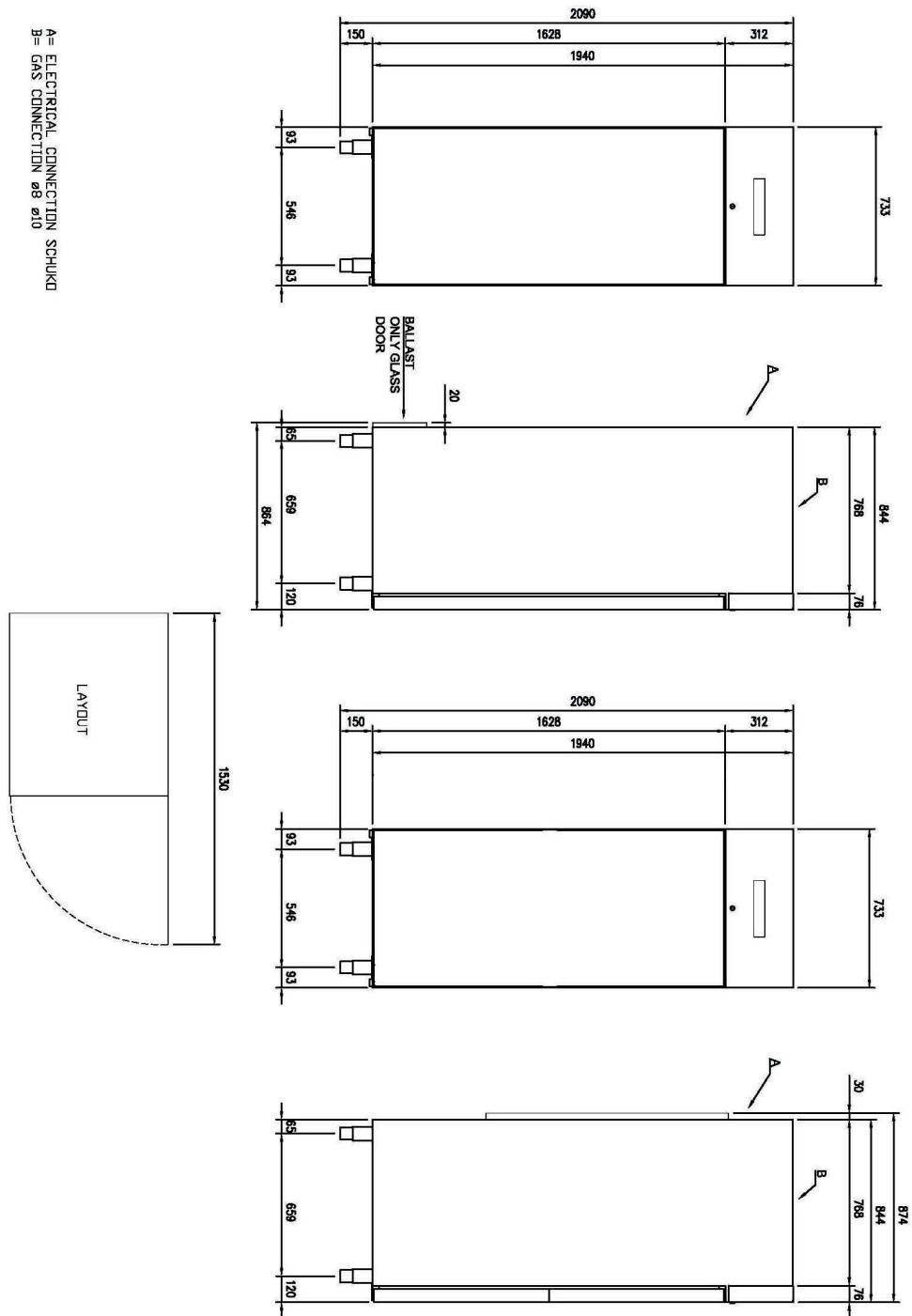
# Technical data sheet

Technical drawing



Freezing cabinet 700 l GN 2/1, stainless steel, left door

<b>Model</b>	<b>SAP Code</b>	00021702
--------------	-----------------	----------



# Technical data sheet

## Product benefits



### Freezing cabinet 700 l GN 2/1, stainless steel, left door

Model	SAP Code	
	00021702	

**1**

#### Insulation 90mm

- minimal losses
- energy saving

**2**

#### Two-sided opening

- location variability
- greater operational efficiency
- better kitchen ergonomics

**3**

#### All-stainless design

- corrosion resistance
- longer service life
- health safety

**4**

#### Automatic defrosting

- nothing needs to be watched
- always working properly without extra operator requirements

**5**

#### Wheels, legs

- variability
- user comfort

**6**

#### High energy class

- minimal energy loss
- high efficiency
- guaranteed chilled food
- cost saving
- hygienic safety

# Technical data sheet

Technical parameters



## Freezing cabinet 700 l GN 2/1, stainless steel, left door

**Model**

**SAP Code**

00021702

**1. SAP Code:**

00021702

**2. Article group:**

Cooling and freezing cabinets

**3. Net Width [mm]:**

733

**4. Net Depth [mm]:**

867

**5. Net Height [mm]:**

2090

**6. Net Weight [kg]:**

149.20

**7. Gross Width [mm]:**

763

**8. Gross depth [mm]:**

873

**9. Gross Height [mm]:**

2170

**10. Gross Weight [kg]:**

164.20

**11. Device type:**

Electric unit

**12. Loading:**

230 V / 1N - 50 Hz

**13. Refrigerant:**

R290

**14. Material:**

AISI 304

**15. Max ambient temperature [°C]:**

40

**16. Device properties 2:**

Cooling

**17. GN / EN size in device:**

GN 2/1

**18. Number of internal parts:**

3

**19. Number of GN / EN:**

24

**20. Chamber volume [l]:**

458

**21. Adjustable feet:**

Yes

**22. Insulation thickness [mm]:**

90

**23. Unit:**

No

**24. Door lock:**

No

**25. Annual energy consumption [kWh]:**

332

**26. Minimum device temperature [°C]:**

-2

**27. Maximum device temperature [°C]:**

7